

YEAR 2016

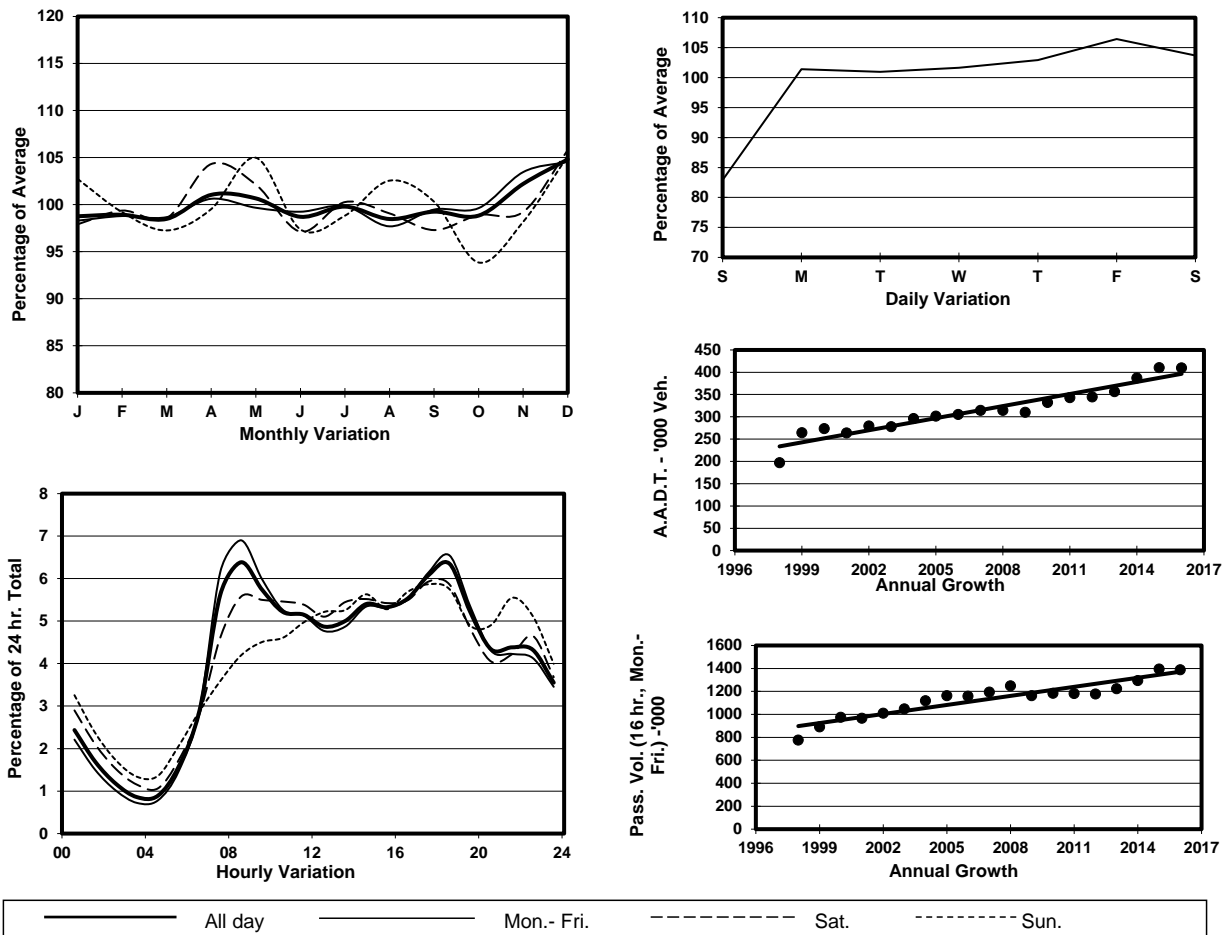
Location

Tsing Yi External Cordon(Tsing Yi Area Boundary)

Stations on Cordon/Screenline

5018, 5027, 5033, 5034, 5038, 6219 and 6221

1. TRAFFIC FLOW VARIATION AND GROWTH



2. TRAFFIC CHARACTERISTICS (BY DIRECTION)

Parameter	All - Day	Mon. - Fri.	Sat.	Sun.
IN BOUND				
A.A.D.T.	197510	204540	207790	164820
R 12 / 24 - %	66	67.3	64.4	59.6
R 16 / 24 - %	84.8	85.8	82.8	80.8
AM Peak Hour	0800-0900	0800-0900	0800-0900	0900-1000
One-way flow at AM peak hour	12260	13620	11480	7080
T - % (AM)	-	20.5	-	-
PM Peak Hour	1800-1900	1800-1900	1700-1800	1800-1900
One-way flow at PM peak hour	12790	13670	12470	9660
T - % (PM)	-	21.7	-	-
Prop.of commercial vehicles - 16 hr.	-	23.4	-	-
OUT BOUND				
A.A.D.T.	212550	220380	221740	177970
R 12 / 24 - %	67.4	68.6	66.2	61.4
R 16 / 24 - %	85.1	86.1	83.3	81.2
AM Peak Hour	0800-0900	0800-0900	0800-0900	0900-1000
One-way flow at AM peak hour	13930	15710	12480	8380
T - % (AM)	-	20.6	-	-
PM Peak Hour	1800-1900	1800-1900	1700-1800	1700-1800
One-way flow at PM peak hour	13250	14150	13020	10500
T - % (PM)	-	16.8	-	-
Prop.of commercial vehicles - 16 hr.	-	21.7	-	-

3. OTHER INFORMATION AND COMMENT

Tsing Yi External Cordon
Year 2016

4. Vehicle classification and occupancy - Monday to Friday

Time		Class of vehicle									
		Motor	Private	Taxi	Private	PLB	Goods veh.		Non	Fr. Bus	
		Cycle	Car		LB		Light	M & H	Fr. Bus	SD	DD
0700-0800	Pro	3.2	41.3	19.5	0.9	1.5	12.4	12.5	4.4	0.1	4.2
	Ocp	1.1	1.6	2.1	6.8	12.5	1.6	1.1	24.4	29.7	57.7
0800-0900 Peak Hour	Pro	2.4	44.9	17.2	0.8	1.2	13.1	12.6	3.8	0.1	4.2
	Ocp	1.1	1.5	2.2	4.9	12.7	1.5	1.2	24.3	26.4	58.5
0900-1000	Pro	1.4	34.9	17.0	0.6	1.5	19.1	18.4	3.0	0.1	4.1
	Ocp	1.1	1.4	2.1	2.2	10.4	1.5	1.2	13.6	13.7	33.6
1000-1100	Pro	1.0	33.2	16.5	0.4	1.3	20.2	20.8	2.7	0.1	3.8
	Ocp	1.0	1.6	2.1	2.5	9.1	1.4	1.2	14.1	17.0	27.8
1100-1200	Pro	1.1	35.3	15.7	0.4	1.6	19.8	18.9	3.0	0.1	4.0
	Ocp	1.1	1.5	2.3	2.4	9.0	1.4	1.2	12.3	6.0	27.5
1200-1300	Pro	0.8	35.4	16.4	1.2	1.5	18.2	19.8	2.9	0.1	3.8
	Ocp	1.1	1.5	2.2	4.7	9.2	1.4	1.2	13.8	9.3	26.2
1300-1400	Pro	1.2	34.5	15.5	0.5	1.3	20.0	20.9	2.4	0.1	3.8
	Ocp	1.1	1.6	2.2	2.2	10.0	1.4	1.2	12.6	15.0	30.0
1400-1500	Pro	1.3	35.0	14.2	0.5	1.2	21.6	19.8	2.8	0.1	3.7
	Ocp	1.1	1.6	2.1	2.6	9.1	1.5	1.2	11.6	10.0	28.1
1500-1600	Pro	1.2	36.0	15.8	0.8	1.3	19.7	18.5	2.9	0.1	3.9
	Ocp	1.1	1.5	2.3	4.4	11.1	1.5	1.2	15.1	12.0	26.1
1600-1700	Pro	1.0	36.1	17.4	1.2	1.1	18.5	17.4	3.3	0.1	4.0
	Ocp	1.2	1.6	2.1	5.4	11.3	1.4	1.2	11.2	18.0	33.2
1700-1800	Pro	2.8	40.6	16.4	1.0	1.3	16.3	13.7	3.5	0.1	4.3
	Ocp	1.1	1.6	2.2	4.3	12.4	1.5	1.2	15.0	23.3	43.6
1800-1900	Pro	2.8	48.8	15.0	0.3	1.4	13.0	10.2	4.1	0.1	4.2
	Ocp	1.1	1.5	2.2	1.5	14.3	1.3	1.2	24.4	20.8	57.7
1900-2000	Pro	1.5	48.9	17.9	0.2	1.4	10.9	9.8	4.2	0.1	5.1
	Ocp	1.1	1.5	2.1	3.4	11.0	1.4	1.1	16.2	15.4	46.1
2000-2100	Pro	1.9	47.1	23.2	0.1	1.8	8.7	8.8	3.3	0.1	5.0
	Ocp	1.1	1.5	2.1	1.3	10.1	1.4	1.1	21.5	16.1	34.3
2100-2200	Pro	1.5	45.1	26.0	0.2	1.6	8.5	9.3	2.4	0.1	5.3
	Ocp	1.1	1.5	2.1	1.6	9.9	1.3	1.1	10.3	6.3	32.3
2200-2300	Pro	2.2	45.6	30.6	0.2	1.9	5.9	6.9	1.5	0.1	5.2
	Ocp	1.1	1.5	2.1	1.6	8.9	1.3	1.1	11.4	10.3	33.8
16 hours	Pro	1.8	40.2	18.0	0.6	1.4	15.6	15.0	3.2	0.1	4.3
	Ocp	1.1	1.5	2.2	4.1	10.8	1.4	1.2	17.0	17.1	38.8

Legend

Pro. Proportion of vehicles in % (Sum may not add up to 100% due to figure rounding)*

Ocp. Average occupancy of vehicles including both driver and passengers*

M&H Medium and Heavy

* All traffic data are collected from combined bounds except for one way traffic